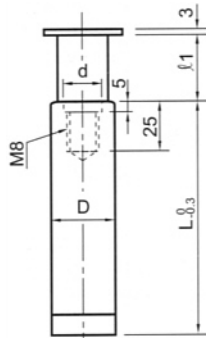




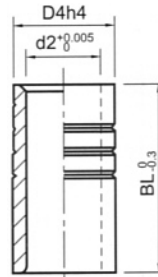
ABN: 81 113 707 092

GPSJC

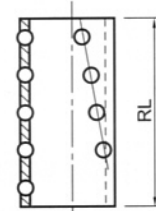
Guide Post Sets Press Fit Type C



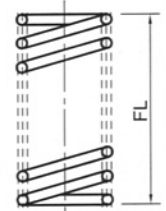
PC



BCA



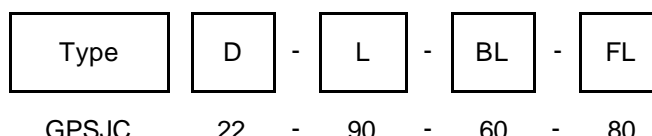
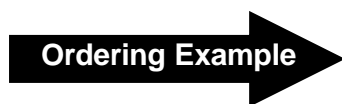
**CBA
CBP**



Type	D	L	BCA BL	CBA/CBP RL	FL
GPSJC	20	100 110 120 130 150 160 170 180	50	50	40 ~ 140
	22	120 130 140 150 160 170 180	50	50	40 ~ 140
			60	60	
	25	120 130 140 150 160 170 180	60	60	40 ~ 150
			80	75	
	28	140 150 160 170 180 190 200	60	60	50 ~ 150
			80	75	
32	160 170 180 190 200 220 240	80	75	70 ~ 190	
		100	90		
38	180 190 200 220 240 260	80	75	80 ~ 190	
		100	90		
45	180 190 200 220 240 260	100	90	80 ~ 190	
		120	110		

Type	D		A	BCA			R
				d2	D4	h4	
GPSJC	20	+0.020 +0.015	4	26	37	-0.000 -0.007	2.0
	22			28	40		3.0
	25			31	45		3.5
	28	+0.025 +0.020	5	36	50	-0.000 -0.008	4.0
	32			40	55		
	38	+0.030 +0.025	6	48	64		
	45			55	74		

RL	S	/ 1
50	0 ~ 19	15
60	0 ~ 23	20
75	0 ~ 30	25
90	0 ~ 30	30
110	0 ~ 37	35



All specifications, dimensions and design characteristics shown are subject to change without notice.

Global Tools & Machines Pty Ltd

Email: sales@globaltools.com.au Mobile: 0409 324 178 Web: www.globaltools.com.au

© The copyright in this material vests in Global Tools & Machines Pty Ltd and may not be reproduced, adapted or communicated without the express written permission of the copyright owner.