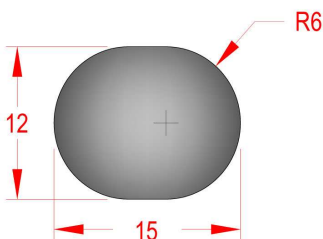


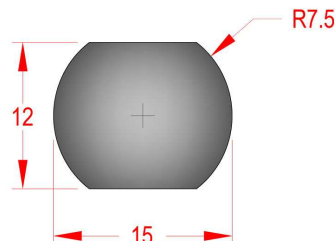
How to order

- ◆ When placing orders please give as much information as possible. The greater the information given, the less likely there is of a mistake or problem occurring with the order. (we will query you if we see a possible problem)
- ◆ All relevant dimensions are required. A very common problem can occur when requesting a round ended shape. **Eg: 15 x 12mm**. This can mean 1 of several shapes. (see example below)
- ◆ Using part numbers helps to eliminate misunderstandings.
- ◆ We suggest you advise material and gauge being punched.
- ◆ Show keyways and centre lines on special shapes.
- ◆ Standard practice is to put clearance on the die. Punch size will give you hole size and die size will give you slug size. (if you require the slug please advise)
- ◆ Solid or re-inforced dies can be supplied on request.
- ◆ On special shapes we recommend rads on any sharp corner, this will give added strength to your tool.
- ◆ **TROUBLESHOOTING**:- for problems such as slug pull please ring and ask, as each situation is different. **Good advise is cheap.**

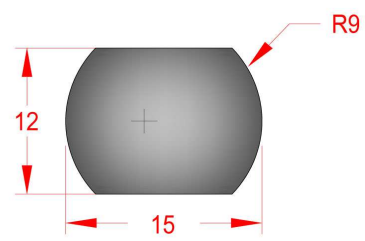
12 x 15 Oblong



12 x 15 Double Dee



12 x 15 x R9 Doorlock



GLOBAL TOOLS & MACHINES

Email: sales@globaltools.com.au

M: 0409 324 178

Web: www.globaltools.com.au

© The copyright in this material vests in Global Tools & Machines Pty Ltd and may not be reproduced, adapted or communicated without the express written permission of the copyright owner.